

April 12, 2022

The following is an excerpt of the minutes of the regular meeting of the Prince Edward County Board of Supervisors held April 12, 2022.

In Re: Redistricting/Amendment to Chapter 42 of County Code

Mrs. Puckett stated that at its February 8, 2022 meeting, the Board of Supervisors approved the following schedule for the completion of the County's redistricting process. Included in this process is the comprehensive update of and amendments to Chapter 42. Elections. of the Prince Edward County Code.

- ✓ February 8, 2022-Authorize advertising draft plan.
- ✓ Ad Dates: - February 16 and February 23, 2022.
- ✓ Public Comment Period (minimum of 30 days) -February 16, 2022 -April 8, 2022
- ✓ Public Hearing -March 8, 2022 at 7 :30 p.m.
- ✓ Public Hearing -March 29, 2022 at 5:30 p.m.
- ✓ Public Comment Period Ends -April 8, 2022 at 4:30 p.m.
- ✓ Board Action on Ordinance and Plan - April 12, 2022
- ✓ If there are amendments: Additional public comment period of 15 days.
- ✓ If no changes, authorize Notice that Redistricting Plan will take effect in 30 days (Friday, May 20, 2022) with publication Ad Dates: April 20 and April 27, 2022.

As the Board is aware, the proposed redistricting plan is the same plan that has been unanimously recommended to the Board by our Citizen Advisory Committee for Redistricting - Ben Gano, Democratic Party; Liz Garrison, Republican Party; and Cam Patterson, NAACP, who chaired the Committee.

The Board of Supervisors charged the Citizen Advisory Committee with creating a draft redistricting plan for Prince Edward County that was guided by adherence to the legal requirements of redistricting, and also the directives outlined by the Board of Supervisors. These included:

- 1) Equal Population - The County has 8 Districts amongst which the population is "substantially equal" with an overall deviation of less than 10%.
- 2) Compactness and Contiguity - Local election districts are largely contiguous and compact territory.
- 3) Clearly Defined and Observable Boundaries -The boundaries of the districts were drawn using roads, rivers, or other natural, constructed or erected permanent structures or visible boundaries on the Tiger Census Block Map.
- 4) Equal Protection Clause - The Constitution of Virginia requires every electoral district be drawn in accordance with the requirements of federal and state laws that address racial and ethnic fairness,

including the Equal Protection Clause of the Fourteenth Amendment to the Constitution of the United States and provisions of the Voting Rights Act of 1965, as amended, and judicial decisions interpreting such laws. Districts shall provide, where practicable, opportunities for racial and ethnic communities to elect candidates of their choice.

Additionally, the directives of the Board of Supervisors included:

- 1) Maintaining 8 districts.
- 2) Consideration for communities of interest.
- 3) Consideration for existing voting precinct boundaries and incumbent representation on local public bodies.
- 4) Consideration of the existing geographical and political boundaries, to include, but not limited to town boundaries.

There were also two actions by the General Assembly that impacted local redistricting:

- 1) Incarcerated Populations - Any person incarcerated in a federal, state or local correctional facility was counted as a resident of the locality where his/her address at the time of incarceration. County Census data was re-allocated by the Virginia Division of Legislative Services before it could be used by localities. This impacted Prince Edward County by reducing our 2020 Census Population of 21,849 to a Redistricting Population of 21,727, a loss of 122 people, most likely the result of the re-allocation of the Piedmont Regional Jail population.
- 2) Split Precincts - This requires that local precincts to be wholly contained within a single congressional district, state senate district and house of delegates district, in addition to local election districts.
 - o This significantly impacted Prince Edward County because the state has split Prince Edward County between two House of Delegates Districts (50 and 56) and two State Senate districts (9 and 10).
 - o Local District 2 is the only part of Prince Edward County in House District 56.
 - o Local Districts 1, 6, 7, 8 and Precinct 502 are in Senate District 10.
 - o What did this mean for the County? We were limited in how we could move census blocks because we could not cross the House of Delegates and State Senate District lines. (reference map showing House and Senate boundaries).

The draft plan before the Board this evening represents the Committee's unanimous recommendation to change eleven (11) census blocks.

- 1) Districts 2, 3, 4 are completely unchanged.
- 2) Districts 1, 6, 7, and 8 have changes.
- 3) District 5 only has changes to Precinct 502.

The specific eleven census block changes are as follows:

- 1) Two blocks were moved from District 5 (Precinct 502) to District 6
 - a. Block 4004 = 17 people -- (map notation # 1)
 - b. Block 4007 = 20 people -- (map notation #2)
- 2) Two blocks were moved from District 5 (Precinct 502) to District 7
 - a. Block 1024 = 0 -- (map notation #3)
 - b. Block 1023 = 12 people -- (map notation #4)
- 3) One block was moved from District 7 to District 8
 - a. Block 202 = 308 people -- (map notation # 5)
- 4) One block was moved from District 8 to District 7
 - a. Block 1035 = 30 people -- (map notation #6)
- 5) Four blocks were moved from District 1 to District 8
 - a. Block 1004 = 1 person -- (map notation #7)
 - b. Block 1003 = 0 -- (map notation #8)
 - c. Block 1002 = 7 people -- (map notation #9)
 - d. Block 1001 = 21 people -- (map notation #10)
- 6) One block was moved from District 8 to District 1
 - a. Block 1027 = 0 -- (map notation #11)

In addition to the information provided to Board and available to the public through the Board's webpage, the County launched a dedicated redistricting webpage to further facilitate and encourage citizen input and engagement. All information available to the Board and the Committee is available to the public. Citizen input was sought through the Board's two advertised and in-person public hearings and the public input methods outlined on each Board agenda (phone, email and traditional mail).


The County has received one telephone question; (2) there have been zero written citizen comments or in-person comments; and (3) the County has received no alternate redistricting proposals. The public comment period ended Friday, April 8, 2022 at 4:30 p.m.

The Board may now consider action on the proposed redistricting plan and the overall amendments to *Chapter 42. Elections.* of the Prince Edward County Code. Following Board action, the next step, in accordance with Section 24.2-129 (C) of the Code of Virginia, is to publish the final plan, to include a plain English description and the text of our ordinance, maps of the proposed boundary changes and notice that the plan will take effect in 30 days. During this 30-day waiting period, any person who will be subject to or affected may challenge the plan in the circuit court of the locality.

Chair Pride made a motion, seconded by Supervisor Cooper-Jones, to approve the redistricting plan and amendments to the Chapter 42. Elections of the Prince Edward County Code as proposed; and to authorize the advertisement of the redistricting plan 30-day notice, as required by Section 24.2-129 (C) of the Code of Virginia; the motion carried:

Aye:	Beverly M. Booth	Nay: None
	Pattie Cooper-Jones	
	J. David Emert	
	Llew W. Gilliam, Jr.	
	Robert M. Jones	
	Odessa H. Pride	
	Jerry R. Townsend	
	James R. Wilck	

CERTIFIED TRUE COPY



Douglas P. Stanley
County Administrator

PRINCE EDWARD COUNTY CODE

Chapter 42. ELECTIONS.**ARTICLE I. IN GENERAL****Secs. 42-1—42-30. Reserved.****ARTICLE II. ELECTION DISTRICTS; PRECINCTS; POLLING PLACES****DIVISION 1. GENERALLY****Sec. 42-31. Precincts and polling places – Established.**

Pursuant to the mandate of Article 7, Section 5 of the Constitution of Virginia, and the authority contained in §15.2-1211, and Title 24.2. Elections. of the *Code of Virginia*, as amended, the election districts of the County of Prince Edward, Virginia, are hereby created and established as set forth in this division.

Sec. 42-32. Districts, precincts, and polling places - Enumerated

- (1) The County of Prince Edward is hereby divided into eight election districts. Each of the county election districts has one precinct, with the exceptions of District 3 and District 5, which each has two precincts.
- (2) The precincts for each election district and the polling place for each precinct shall be as set forth below:

District Number	District Name	Precinct Number and Name	Polling Place Location
1	Farmville	101-Farmville	Farmville Area Bus Shop, 502 Doswell Street, Farmville, VA
2	Lockett	201-Lockett	Rice Volunteer Fire Dept., 948 Rices Depot Road, Rice, VA
3	Leigh	301-Leigh	Mt. Zion Second Baptist Church, 3753 Green Bay Road, Green Bay, VA
		302-Mt. Pleasant	Mt. Pleasant Methodist Church, 5083 Mt. Pleasant Road, Meherrin, VA
4	Hampden	401-Hampden	Hampden-Sydney Volunteer Fire Department, 159 S. Boundary Road, Farmville, VA
5	Buffalo	501-Darlington Heights	Darlington Heights Volunteer Fire Department, 2673 Darlington Heights Road, Pamplin, VA
		502-Buffero Heights	County Department of Social Services Building, 56-B SMI Way, Farmville, VA
6	Prospect	601-Prospect	Prospect Volunteer Fire Department, 45 Campbell Hill Road, Prospect, VA
7	West End	701-West End	Farmville Volunteer Fire Department, 1000 West Third Street, Farmville, VA
8	Center	801-Center	Prince Edward Elks Lodge #269, 636 S. Main Street, Farmville, VA

Sec. 42-33. Districts and precincts – Boundaries.

The boundaries of the respective districts and precincts are as set forth below. References to all roads, easement, railroads and watercourses are to their center lines, unless otherwise noted

- (1) **Election District #1. Precinct #101.** All of that territory within the following boundaries:
- Commencing at a point on Virginia Highway 45 (North Main Street) where the corporate limits of the Town of Farmville, Prince Edward County, Cumberland County and the Appomattox River intersect on the northerly side of the Town of Farmville;
 - thence in a southwesterly direction along Virginia Highway 45 (North Main Street) to the intersection of said North Main Street with U.S. Business Route 460 (Third Street);
 - thence southeasterly along said U.S. Business Route 460 (East Third Street) until it intersects with Vaughan Street; thence southwesterly along said Vaughan Street until said Vaughan Street intersects with Longwood Avenue;
 - thence southeasterly along said Longwood Avenue until said Longwood Avenue intersects with Catlin Street; thence southerly along said Catlin street until said Catlin Street ends and intersects an unnamed creek;
 - thence in a southwesterly direction along said unnamed creek until its source intersects with Milnwood Road; thence southwesterly and westerly along said Milnwood Road until said Milnwood Road intersects with U. S. Business Route 15 (South Main Street);
 - thence southerly along U.S. Business Route 15 (South Main Street) and continuing past the southern corporate limits of the Town of Farmville; thence southwesterly along U.S. Highway 15 (Farmville Road) until it intersects U.S. Route 460 West (Prince Edward Highway);
 - thence westerly along U.S. Route 460 West (Prince Edward Highway) until it intersects Secondary Highway 628 (Germantown Road); thence southwesterly along Secondary Highway 628 (Germantown Road) until it intersects with Secondary Highway 642 (Germantown Road) and Secondary Highway 628 (Commerce Road);
 - thence westerly along Secondary Highway 642 (Germantown Road) until it intersects with Secondary Highway 643 (Back Hampden-Sydney Road);
 - thence along said Secondary Highway 643 (Back Hampden-Sydney Road) in a southwesterly direction until it intersects with Secondary Highway 648 (Hard Times Road);
 - thence in an easterly direction along the boundary line between the Farmville and Hampden Magisterial Districts to U.S. Highway 15 (Farmville Road) where it intersects with Old Dairy Lane;
 - thence in a southerly direction along U.S. Highway 15 (Farmville Road) until it intersects with Secondary Highway 665 (Worsham Road);
 - thence in an easterly direction along Secondary Highway 665 (Worsham Road) until it intersects with Secondary Highway 691 (Green Town Road);
 - thence in a northeasterly direction along Secondary Highway 691 (Green Town Road) until it ends at a Private Drive (Pickett's Spring Lane); thence in a northeasterly direction along the Private Drive (Pickett's Spring Lane) until it intersects with the Tanyard Branch at Farmville Lake;
 - thence in an east southeasterly direction along Tanyard Branch until its confluence with Briery Creek; thence in a northeasterly direction along said Briery Creek until it intersects with U.S. Route 460 West (Prince Edward Highway);
 - thence in an easterly direction along U.S. Route 460 West (Prince Edward Highway) until it intersects with U.S. Business Route 460 (East Third Street);
 - thence westerly along U.S. Business Route 460 (East Third Street) until it intersects with Bush River along said U.S. Business Route 460 (East Third Street);
 - thence northeasterly along Bush River until it intersects the corporate limits of the Town of Farmville; thence northwesterly along said corporate limits until said corporate limits intersect the Appomattox River and Cumberland County; and
 - thence in a westerly direction along the Appomattox River until the point of beginning, including all the territory encompassed within said lines.
- (2) **Election District #2. Precinct #201.** All of that territory located within the following boundaries:
-

-
- Commencing at a point where Secondary Highway 621 (Burke's Tavern Road) intersects the Nottoway County line;
 - thence proceeding in a westerly direction along said Secondary Highway 607 (Orchard Road) until it intersects with Secondary Highway 621 (Grape Lawn Road);
 - thence proceeding in a southwesterly direction along Secondary Highway 621 (Grape Lawn Road) until it intersects with Secondary Highway 641 (Williams Road);
 - thence in a northwesterly direction along said Secondary Highway 641 (Williams Road) until it intersects Secondary Highway 612 (Sandy River Road);
 - thence in a westerly direction along said Secondary Highway 612 (Sandy River Road) until it intersects with Secondary Highway 696 (Green Bay Road); thence in a northwesterly direction along said Secondary Highway 696 (Green Bay Road) until it intersects with Secondary Highway 636 (Poorhouse Road);
 - thence in a northwesterly direction along said Secondary Highway 636 (Poorhouse Road) until it intersects with Secondary Highway 637 (Worsham Road);
 - thence in a westerly direction along said Secondary Highway 637 (Worsham Road) until it intersects with Secondary Highway 630 (Old Ridge Road); thence in a northerly direction along said Secondary Highway 630 (Old Ridge Road) until it intersects Secondary Highway 628 (Zion Hill Road);
 - thence in a westerly direction along said Secondary Highway 628 (Zion Hill Road) until it intersects Briery Creek; thence northerly and northeasterly along said Briery Creek until it intersects with U.S. Highway 460 West (Prince Edward Highway);
 - thence easterly along said U.S. Highway 460 West (Prince Edward Highway) until it intersects the Bush River;
 - thence northerly along said Bush River until it intersects with the corporate limits of the Town of Farmville; thence in a northwesterly and northerly direction along said corporate limits until said corporate limits intersect the Appomattox River and Cumberland County;
 - thence in a general easterly and northeasterly direction along said Appomattox River until said river intersects with the Amelia County line; and
 - thence in a southerly direction along said Amelia County line and the Nottoway County line until its intersection with Secondary Highway 621 (Burke's Tavern Road), the point of beginning, including all of the territory encompassed within said lines.
- (3) **Election District #3. Precinct #301.** All of that territory located within the following boundaries:
- Commencing at a point where Secondary Highway 621 (Burke's Tavern Road) intersects the Nottoway County line;
 - thence proceeding in a southwesterly direction along said Secondary Highway 607 (Orchard Road) until it intersects with Secondary Highway 621 (Grape Lawn Road);
 - thence proceeding in a westerly direction along Secondary Highway 621 (Grape Lawn Road) until it intersects with Secondary Highway 641 (Williams Road);
 - thence in a northwesterly direction along said Secondary Highway 641 (Williams Road) until it intersects Secondary Highway 612 (Sandy River Road);
 - thence in a westerly direction along said Secondary Highway 612 (Sandy River Road) until it intersects with Secondary Highway 696 (Green Bay Road);
 - thence in a northwesterly direction along said Secondary Highway 696 (Green Bay Road) until it intersects with Secondary Highway 636 (Poorhouse Road);
 - thence in a northwesterly direction along said Secondary Highway 636 (Poorhouse Road) until it intersects with Secondary Highway 637 (Worsham Road);
 - thence in a westerly direction along said Secondary Highway 637 (Worsham Road) until it intersects with Secondary Highway 630 (Old Ridge Road);
 - thence in a northerly direction along said Secondary Highway 630 (Old Ridge Road) until it intersects Secondary Highway 628 (Zion Hill Road);
 - thence in a westerly direction along said Secondary Highway 628 (Zion Hill Road) until it intersects Briery Creek; thence up Briery Creek in a southwesterly direction until it intersects with U.S. Highway 15 (Farmville Road);
-

-
- thence in a southeasterly and southerly direction along U.S. Highway 15 (Farmville Road) until it intersects with Secondary Highway 630 (Meherrin Road) at New Witt Church;
 - thence along said Secondary Highway 630 (Meherrin Road) until it intersects with Rice Creek;
 - thence in a northeasterly direction along Rice Creek until its confluence with Bush River;
 - thence in a southerly direction along Bush River to its branch with Camp Creek;
 - thence in a southeasterly direction along Camp Creek and the eastern border of Census Tract 9303, Block 5048 to the intersection of Secondary Highway 632 (Schultz Mill Road) and Secondary Highway 630 (Meherrin Road);
 - thence in a southeasterly direction along Meherrin Road to the Lunenburg County line;
 - thence generally easterly along the Lunenburg County line until the Lunenburg County line intersects with the Nottoway County line; and
 - thence in a northerly direction along said Nottoway County line until it intersects with Secondary Highway 621 (Burke's Tavern Road), the point of beginning, including all of the territory encompassed within said lines.
- (4) **Election District #3. Precinct #302.** All of that territory located within the following boundaries.
- Commencing at a point where Secondary Highway 630 (Meherrin Road) intersects with Rice Creek;
 - thence in a northeasterly direction along Rice Creek until its confluence with Bush River;
 - thence in a southerly direction along Bush River to its branch with Camp Creek;
 - thence in a southeasterly direction along Camp Creek to the intersection of Secondary Highway 632 (Schultz Mill Road) and Secondary Highway 630 (Meherrin Road);
 - thence in a southeasterly direction along Meherrin Road to the Lunenburg County line;
 - thence generally westerly along the Lunenburg County and then Charlotte County lines to its intersection with U.S. Highway 15 (Farmville Road);
 - thence in a northerly direction along U.S. Highway 15 (Farmville Road) to its intersection with Secondary Highway 647 (Loman Road);
 - thence in an easterly direction along Secondary Highway 647 (Loman Road) to its intersection with Secondary Highway 630 (Meherrin Road); and
 - thence in a northerly direction along Secondary Highway 630 (Meherrin Road) to the point of beginning, including all of the territory encompassed within said lines.
- (5) **Election District #4. Precinct #401.** All of that territory encompassed within the following boundaries:
- Commencing at a point where U.S. Highway 15 (Farmville Road) intersects the Charlotte County line; thence in a north northeasterly direction along said U.S. Highway 15 (Farmville Road) until it intersects with Secondary Highway 647 (Loman Road);
 - thence in an east northeasterly direction along said Secondary Highway 647 (Loman Road) until it intersects with Secondary Highway 630 (Meherrin Road);
 - thence in a northwesterly direction along said Secondary Highway 630 (Meherrin Road) until it intersects with U.S. Highway 15 (Farmville Road);
 - thence in a northerly and northwesterly direction along said U.S. Highway 15 (Farmville Road) until it intersects with Briery Creek;
 - thence in a northeasterly direction along said Briery Creek until it intersects with Tanyard Branch;
 - thence in a west northwesterly direction along Tanyard Branch until it intersects with a Private Drive (Pickett's Spring Lane) at Farmville Lake;
 - thence in a southwesterly direction along the Private Drive (Pickett's Spring Lane) until it intersects with Secondary Highway 691 (Green Town Road);
 - thence in a southwesterly direction along Secondary Highway 691 (Green Town Road) until it intersects with Secondary Highway 665 (Worsham Road);
 - thence in a westerly direction along Secondary Highway 665 (Worsham Road) until it intersects with U.S. Highway 15 (Farmville Road);
 - thence in a northerly direction along U.S. Highway 15 (Farmville Road) until its intersection with Old Dairy Lane and the Magisterial District boundary between Farmville and Hampden Districts;
-

-
- thence continuing northwest along said Magisterial District Boundary until said boundary intersects with Secondary Highway 643 (Back Hampden-Sydney Road) at its intersection with Secondary Highway 648 (Hard Times Road);
 - thence in a southerly direction along said Secondary Highway 643 (Back Hampden-Sydney Road) until it intersects with Secondary Highway 658 (Five Forks Road);
 - thence in a westerly direction along said Secondary Highway 658 (Five Forks Road) until it intersects Buffalo Creek;
 - thence in a southwesterly direction along said Buffalo Creek until it intersects with Carey Creek;
 - thence in a southerly direction along said Carey Creek until it intersects with Secondary Highway 699 (Carter Road);
 - thence in a westerly direction along said Secondary Highway 699 (Carter Road) until it intersects with Secondary Highway 667 (Bloomfield Road);
 - thence in a southerly direction along said Secondary Highway 667 (Bloomfield Road) until it intersects with Secondary Highway 671 (County Line Road) at the Charlotte County line; and
 - thence in a southeasterly direction along said Charlotte County line until said line intersects with U.S. Highway 15 (Farmville Road) at the point of beginning and including all the territory encompassed within said lines.
- (6) **Election District #5. Precinct #501.** All of that territory located within the following boundaries.
- Commencing at a point where Secondary Highway 667 (Bloomfield Road) intersects Secondary Highway 671 (County Line Road) at the Charlotte County line;
 - thence in a northerly direction along said Secondary Highway 667 (Bloomfield Road) until it intersects Secondary Highway 699 (Carter Road);
 - thence in an easterly direction along said Secondary Highway 699 (Carter Road) until it intersects with Carey Creek;
 - thence in a northerly direction down said Carey Creek until it intersects with Buffalo Creek;
 - thence in a northeasterly direction along said Buffalo Creek until it intersects Secondary Highway 648 (Hard Times Road) at Locket Creek's confluence with Buffalo Creek;
 - thence in a westerly and southwesterly direction along said Locket Creek until said creek's point of beginning at the intersection of Secondary Highway 658 (Five Forks Road) and Secondary Highway 664 (Singleton Road);
 - thence in a westerly and northwesterly direction along said Secondary Highway 658 (Five Forks Road) until it intersects U.S. Highway 460 West (Prince Edward Highway) until it intersects Secondary Highway 627 (Hixburg Road);
 - thence in a southwesterly direction along the Appomattox County and Charlotte County line until said line intersects with Secondary Highway 671 (County Line Road); and
 - thence in an easterly and southeasterly direction along said Secondary Highway 671 (County Line Road) at the point of beginning, including all territory encompassed within said lines.
- (7) **Election District #5. Precinct #502.** All of that territory located within the following boundaries.
- Commencing at a point where Buffalo Creek intersects Secondary Highway 658 (Five Forks Road);
 - thence in an easterly direction along said Secondary Highway 658 (Five Forks Road) until it intersects with Secondary Highway 643 (Back Hampden-Sydney Road);
 - thence in a northerly direction along said Secondary Highway 643 (Back Hampden-Sydney Road) until it intersects with Secondary Highway 642 (Germantown Road);
 - thence in an easterly direction along Secondary Highway 642 (Germantown Road) until its intersection with Secondary Highway 628 (Germantown Road);
 - thence in a northerly direction along Secondary Highway 628 (Germantown Road) until it intersects with the corporate limits of the Town of Farmville;
 - thence in a westerly, northerly, northwesterly, and easterly direction along said corporate limits of the Town of Farmville until said corporate limits intersect with High Bridge Trail State Park (formerly Norfolk-Southern railroad tracks);
 - thence in an easterly direction along High Bridge Trail State Park (formerly Norfolk-Southern railroad tracks) until it intersects with Buffalo Creek at the corporate limits of the town of Farmville;
-

-
- thence in a northeasterly direction along said Buffalo Creek and corporate limits until said corporate limits intersect the Appomattox River;
 - thence in a westerly and northwesterly direction along said Appomattox River until it intersects the Dominion Energy Transmission Line Easement;
 - thence in a westerly direction along said Dominion Energy Transmission Line Easement until it intersects with Tuscan Lane;
 - thence in a southerly direction along said Tuscan Lane until it intersects with Lakeside Drive;
 - thence in a southerly direction along Lakeside Drive until it intersects with the U.S. Highway 15-460 Business (West Third Street);
 - thence in a westerly direction along said U.S. Highway 15-460 (West Third Street) until it intersects with the U.S. Highway 15 (Sheppards Road);
 - thence in a southerly direction along U.S. Highway 15 (Sheppards Road) until it intersects with the U.S. Highway 15-460 Bypass (Prince Edward Highway);
 - thence in a southwesterly direction along said U.S. Highway 15-460 Bypass (Prince Edward Highway) until it intersects with the High Bridge Trail State Park (formerly the Norfolk-Southern railroad tracks);
 - thence in a westerly direction along said High Bridge Trail State Park (formerly Norfolk-Southern railroad tracks) until said Park intersections with Secondary Highway 648 (Hard Times Road);
 - thence in a southerly direction along Secondary Highway 648 (Hard Times Road) until it intersects Locket Creek at Locket Creek's confluence with Buffalo Creek; and
 - thence in a southerly direction along Buffalo Creek to the point of beginning, including all territory encompassed within said lines.

(8) **Election District #6. Precinct #601.** All of that territory encompassed within the following boundaries:

- Commencing at a point where Secondary Highway 627 (Hixburg Road) intersects Vaughans Creek at the Appomattox County line;
 - thence in a southeasterly direction along said Secondary Highway 627 (Hixburg Road) until it intersects with U.S. Highway 460 West (Prince Edward Highway);
 - thence in a southwesterly direction along said U.S. Highway 460 West (Prince Edward Highway) until it intersects with Secondary Highway 658 (Five Forks Road);
 - thence in an easterly direction along said Secondary Highway 658 (Five Forks Road) to the beginning of the main branch of Lockett Creek at the intersection of said Secondary Highway 658 (Five Forks Road) and Secondary Highway 664 (Singleton Road);
 - thence down said Lockett Creek in an easterly and northeasterly direction until it intersects with Secondary Highway 648 (Hard Times Road);
 - thence in a northerly direction along said Secondary Highway 648 (Hard Times Road) until it intersects with the High Bridge Trail State Park (formerly Norfolk-Southern railroad tracks);
 - thence in an easterly direction along said High Bridge Trail State Park (formerly Norfolk-Southern railroad tracks) until said Park intersect U.S. Highway 15-460 Bypass (Prince Edward Highway);
 - thence in a northwesterly direction along said U.S. Highway 15-460 Bypass (Prince Edward Highway) until it intersects with U.S. Highway 15 (Sheppards Road);
 - thence in a northerly direction along said U.S. Highway 15 (Sheppards Road) until it intersects with U.S. Highway 15-460 Business (West Third Street);
 - thence in an easterly direction along U.S. Highway 15-460 Business (West Third Street) until it intersects with Lakeside Drive;
 - then in a northerly direction along said Lakeside Drive until it intersects with Tuscan Lane;
 - thence in a northerly direction along said Tuscan Lane until it intersects with the Dominion Energy Transmission Line Easement;
 - thence in a northeasterly direction along the Dominion Energy Transmission Line Easement until it intersects the Appomattox River; thence westerly and northwesterly along the Appomattox River until it intersects with the Appomattox County line; and
 - thence in a southwesterly direction along the Appomattox County line until said line intersects with Secondary Highway 627 (Hixburg Road), the point of beginning, including all of the territory encompassed within said lines.
-

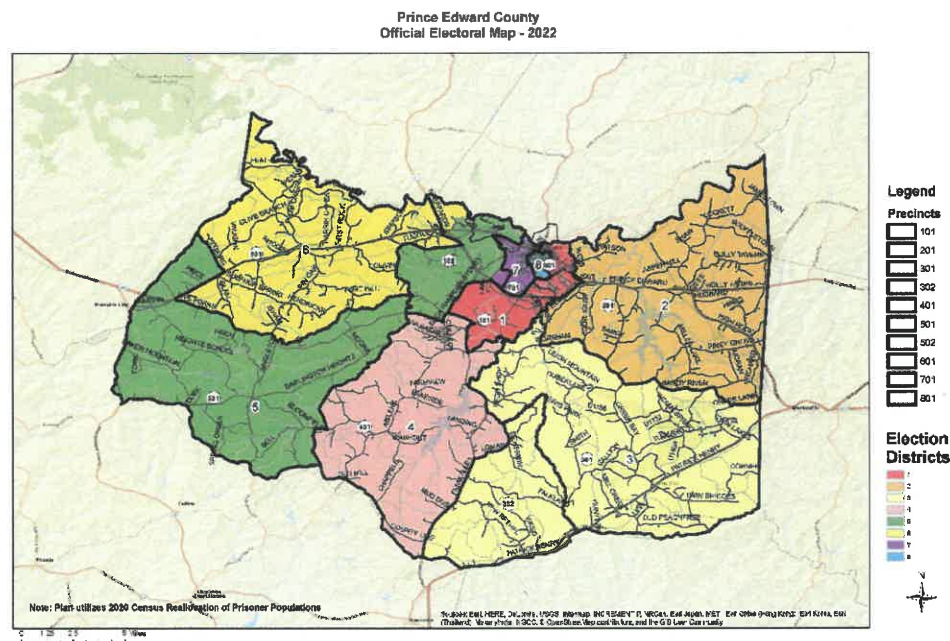
-
- (9) **Election District #7. Precinct #701.** All of that territory encompassed within the following boundaries:
- Commencing at a point on Virginia Highway 45 (North Main Street) where the corporate limits of the Town of Farmville, Prince Edward County, Cumberland County and the Appomattox River intersect on the northerly side of the Town of Farmville;
 - thence in a southwesterly direction along Virginia Highway 45 (North Main Street) to the intersection of said North Main Street with High Street;
 - thence in a westerly direction along High Street until its intersection with Griffin Boulevard; thence in a southerly direction along Griffin Boulevard until its intersection with Redford Street;
 - thence in a westerly direction along Redford Street until its intersection with Hill Street;
 - thence in a westerly direction along Hill Street until said Hill Street intersects School Street;
 - thence in a westerly direction along School Street until said School Street intersects First Avenue;
 - thence in a southeasterly direction along First Avenue until its intersection with Hurd Street;
 - thence along Hurd Street one block in an easterly direction until its intersection with Hill Street;
 - thence along Hill Street in a southerly direction one block until its intersection with Barrow Street;
 - thence along Barrow Street in an easterly direction one block until its intersection with Griffin Boulevard;
 - thence along Griffin Boulevard in a southerly direction one block until its intersection with South Main Street;
 - thence southerly along U.S. Business Route 15 (South Main Street) and continuing past the southern corporate limits of the Town of Farmville;
 - thence southwesterly along U.S. Highway 15 (Farmville Road) until it intersects U.S. Route 460 West (Prince Edward Highway);
 - thence in a westerly direction along U.S. Highway 460-15 Bypass (Prince Edward Highway) until its intersection with Secondary Road 628 (Germantown Road);
 - thence in a northerly direction along Secondary Road 628 (Germantown Road) until it intersects with the corporate limits of the Town of Farmville;
 - thence in a westerly, northerly, northwesterly, and easterly direction along said corporate limits of the Town of Farmville until said corporate limits intersect with High Bridge Trail State Park (formerly Norfolk-Southern Railroad tracks);
 - thence in an easterly direction along said High Bridge Trail State Park (formerly Norfolk-Southern Railroad tracks) until it intersects with Buffalo Creek at the corporate limits of the Town of Farmville;
 - thence in a northeasterly direction along said Buffalo Creek and corporate limits until said corporate limits intersect the Appomattox River; and
 - thence in an easterly direction along the Appomattox River to a point on Virginia Highway 45 (North Main Street) where the corporate limits of the Town of Farmville, Prince Edward County, Cumberland County and the Appomattox River intersect, the point of beginning, including all of the territory encompassed within said lines.
- (10) **Election district #8. Precinct 801.** All of that territory encompassed within the following boundaries:
- Commencing at a point where U.S. Business Route 15 (South Main Street) intersects with Milnwood Road;
 - thence in a northerly direction along U.S. Business Route 15 (South Main Street) until said U.S. Business Route 15 (South Main Street) intersects with Griffin Boulevard;
 - thence in a northerly direction along Griffin Boulevard until said Griffin Boulevard intersects with Barrow Street;
 - thence westerly one block along said Barrow Street until said Barrow Street intersects with Hill Street;
 - thence in a northerly direction one block along said Hill Street until said Hill Street intersects with Hurd Street;
 - thence in a westerly direction along said Hurd Street until said Hurd Street intersects with First Avenue;
 - thence in a northerly direction along said First Avenue until said First Avenue intersects with School Street;
 - thence easterly along said School Street until said School Street intersects with Hill Street;
-

- thence northeasterly along said Hill Street until said Hill Street intersects Redford Street;
- thence easterly along Redford Street until said Redford Street intersects Griffin Boulevard;
- thence in a northerly direction one block along said Griffin Boulevard until said Griffin Boulevard intersects High Street;
- thence in an easterly direction along said High Street until said High Street intersects with U.S. Business Route 15 (North Main Street);
- thence in a northly direction along said U.S. Business Route 15 (North Main Street) until said U.S. Business Route 15 (North Main Street) intersects with U.S. Business Route 460 (East Third Street);
- thence southeasterly along said U.S. Business Route 460 (East Third Street) until said U.S. Business Route 460 (East Third Street) intersects with Vaughan Street;
- thence in a southwesterly direction along said Vaughan Street until said Vaughan Street intersects Longwood Avenue;
- thence easterly along said Longwood Avenue until said Longwood Avenue intersects with Catlin Street;
- thence in a southerly direction along Catlin Street until said Catlin Street ends and intersects an unnamed creek;
- thence in a southeasterly direction along said unnamed creek until its source intersects Milnwood Road; and
- thence in a southwesterly direction along Milnwood Road to U.S. Business Route 15 (South Main Street), the point of beginning, including all of the territory encompassed within said lines.

(11) **Central absentee election precinct.** In addition to the foregoing precincts, there is hereby established a permanent central absentee voter precinct to be used for all elections held in Prince Edward County and any incorporated town therein. The polling place for such precinct shall be located in the "Registrar's Office Annex" of Prince Edward County, Virginia, the address for which is Prince Edward County Courthouse, 111 N. South Street, Farmville, Virginia 23901. Such central absentee precinct shall be operated as provided for in *Code of Virginia*, §24.2-712, as amended.

Sec. 42-34. Maps.

The map of the election districts and precincts, which follows, shall control in those instances where there is a discrepancy between the map and the description in Section 42-33 above. The county administrator is directed to prepare enlarged detailed copies of the election map and to provide two (2) copies of such to the registrar.



Sec. 42-35. Board of supervisors members.

- a. Election. One supervisor shall be elected from each election district created by this division.
- b. Terms. The members of the board of supervisors shall be elected for four-year terms which are staggered at two-year intervals.

Sec. 42-36. Repeal of prior ordinances.

All ordinances contrary to the provisions of this article are hereby repealed effective May 20, 2022.

Sec. 42-37. Severability.

If any portion or provision of this ordinance be declared invalid or unconstitutional, such division shall not affect the validity or constitutionality of any other portion of this ordinance.

###